

SEERVII



FLANGES CATALOG

Built for Tight, Leak-Proof Performance

www.seervii.com

About seervii

Reliable Industrial Supply. Trusted Global Trade.

SEERVII is an India-based industrial supply and export company, providing a wide range of engineering products to industries and global buyers.

We specialize in sourcing and supplying valves, pumps, electric motors, bearings, fasteners, flanges, pipe fittings, electrical items, power tools, and safety products through a trusted supply network.

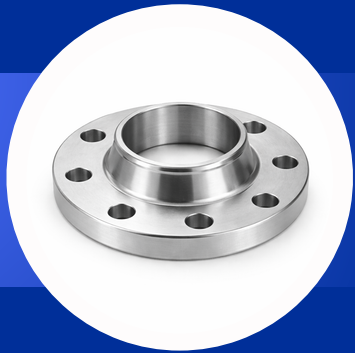
With a focus on quality, timely delivery, and transparent communication, SEERVII supports both domestic and international customers with dependable supply solutions.



Weld Neck Flanges

Size Range: ½" to 48" (DN15 to DN1200)

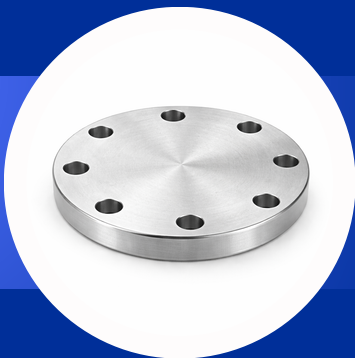
- **Standards:** ANSI B16.5 / ASME / DIN / EN 1092-1
- **Material:** Carbon Steel / Alloy Steel / Stainless Steel (SS304 / SS316)
- **Pressure Rating:** Class 150 to 2500 / PN10 to PN40
- **Facing Type:** Raised Face (RF) / Flat Face (FF) / Ring Type Joint (RTJ)
- **Manufacturing:** Forged / Machined
- **Surface Finish:** Anti-rust Oil / Black Paint / Galvanized
- **Applications:** Oil & Gas, Petrochemical, Power Plants, Pipelines, Refineries



Slip On Flanges

Size Range: ½" to 48" (DN15 to DN1200)

- **Standards:** ANSI B16.5 / ASME / DIN / EN 1092-1
- **Material:** Carbon Steel / Alloy Steel / Stainless Steel (SS304 / SS316)
- **Pressure Rating:** Class 150 to 1500 / PN10 to PN40
- **Facing Type:** Raised Face (RF) / Flat Face (FF)
- **Manufacturing:** Forged / Machined
- **Surface Finish:** Anti-rust Oil / Black Paint / Galvanized
- **Applications:** Water Lines, Low Pressure Systems, Chemical, Petrochemical, General Piping



Blind Flanges

Size Range: ½" to 48" (DN15 to DN1200)

- **Standards:** ANSI B16.5 / ASME / DIN / EN 1092-1
- **Material:** Carbon Steel / Alloy Steel / Stainless Steel (SS304 / SS316)
- **Pressure Rating:** Class 150 to 2500 / PN10 to PN40
- **Facing Type:** Raised Face (RF) / Flat Face (FF) / Ring Type Joint (RTJ)
- **Manufacturing:** Forged / Machined
- **Surface Finish:** Anti-rust Oil / Black Paint / Galvanized
- **Applications:** Pipeline End Closure, Pressure Sealing, Oil & Gas, Petrochemical, Power Plants

Socket Weld Flanges

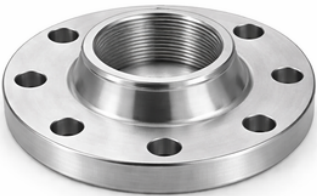
Size Range: ½" to 24" (DN15 to DN600)



- **Standards:** ANSI B16.5 / ASME / DIN / EN 1092-1
- **Material:** Carbon Steel / Alloy Steel / Stainless Steel (SS304 / SS316)
- **Pressure Rating:** Class 150 to 2500 / PN10 to PN40
- **Facing Type:** Raised Face (RF) / Flat Face (FF)
- **Manufacturing:** Forged / Machined
- **Surface Finish:** Anti-rust Oil / Black Paint / Galvanized
- **Applications:** High Pressure Lines, Small Bore Piping, Oil & Gas, Petrochemical, Power Plants

Threaded Flanges

Size Range: ½" to 24" (DN15 to DN600)



- **Standards:** ANSI B16.5 / ASME / DIN / EN 1092-1
- **Material:** Carbon Steel / Alloy Steel / Stainless Steel (SS304 / SS316)
- **Pressure Rating:** Class 150 to 1500 / PN10 to PN40
- **Facing Type:** Raised Face (RF) / Flat Face (FF)
- **Thread Type:** NPT / BSPT / BSPP
- **Surface Finish:** Anti-rust Oil / Black Paint / Galvanized
- **Applications:** Low Pressure Systems, Non-Weld Applications, Oil & Gas, Chemical, Water Lines

Lap Joint Flanges

Size Range: ½" to 48" (DN15 to DN1200)



- **Standards:** ANSI B16.5 / ASME / DIN / EN 1092-1
- **Material:** Carbon Steel / Alloy Steel / Stainless Steel (SS304 / SS316)
- **Pressure Rating:** Class 150 to 600 / PN10 to PN40
- **Facing Type:** Flat Face (FF) / Stub End Compatible
- **Design:** Loose Backing Flange with Stub End
- **Surface Finish:** Anti-rust Oil / Black Paint / Galvanized
- **Applications:** Corrosive Lines, Chemical Industry, Frequent Dismantling Systems, Low Pressure Piping

Orifice Flanges

Size Range: ½" to 24" (DN15 to DN600)

- **Standards:** ANSI B16.36 / ASME / DIN / EN 1092-1
- **Material:** Carbon Steel / Alloy Steel / Stainless Steel (SS304 / SS316)
- **Pressure Rating:** Class 300 to 2500 / PN10 to PN40
- **Facing Type:** Raised Face (RF) / Ring Type Joint (RTJ)
- **Design:** With Pressure Tapping (Orifice Plate Compatible)
- **Surface Finish:** Anti-rust Oil / Black Paint / Galvanized
- **Applications:** Flow Measurement, Oil & Gas, Petrochemical, Power Plants, Process Industry



Spectacle Blind Flanges

Size Range: ½" to 48" (DN15 to DN1200)

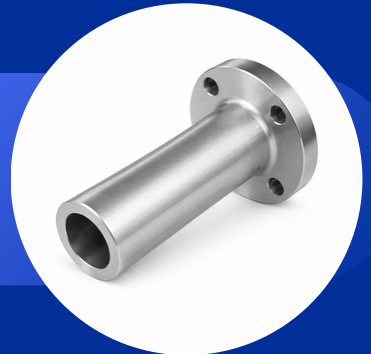
- **Standards:** ANSI B16.48 / ASME / DIN / EN
- **Material:** Carbon Steel / Alloy Steel / Stainless Steel (SS304 / SS316)
- **Pressure Rating:** Class 150 to 2500
- **Type:** Figure-8 (Spade & Spacer) / Paddle Blind
- **Facing Type:** Raised Face (RF) / Ring Type Joint (RTJ)
- **Surface Finish:** Anti-rust Oil / Black Paint / Galvanized
- **Applications:** Pipeline Isolation, Maintenance Systems, Oil & Gas, Petrochemical, Refineries



Long Weld Neck Flanges

Size Range: ½" to 48" (DN15 to DN1200)

- **Standards:** ASME B16.5 / ASME B16.47 / DIN / EN
- **Material:** Carbon Steel / Alloy Steel / Stainless Steel (SS304 / SS316)
- **Pressure Rating:** Class 150 to 2500
- **Design:** Extended Neck (Integral Reinforcement)
- **Facing Type:** Raised Face (RF) / Ring Type Joint (RTJ)
- **Surface Finish:** Anti-rust Oil / Black Paint / Galvanized
- **Applications:** High Pressure & Temperature Systems, Pressure Vessels, Oil & Gas, Petrochemical, Power Plants



SEERVII

Contact



+91 8866325879



info@seervii.com



www.seervii.com



Ahmedabad