

SEERVII



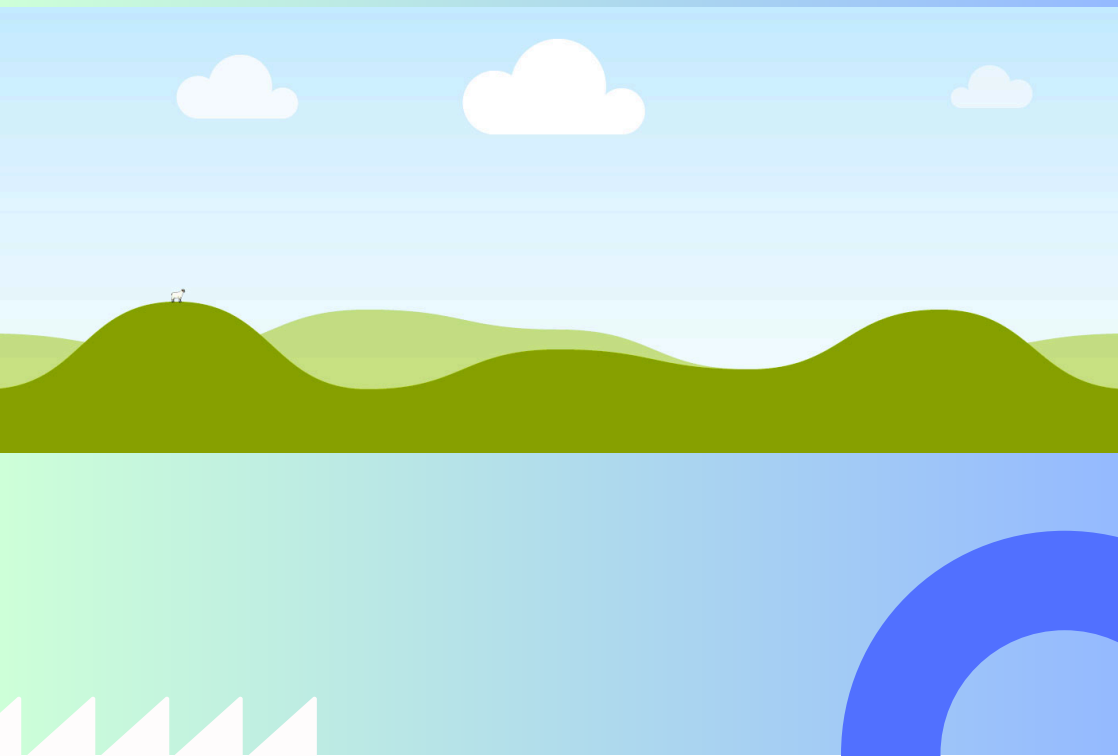
PRODUCT CATALOG

Powering Industries with Precision Valves

www.10xexport.com

About seervii

Globally Connected. Trust-Driven





Diaphragm Valves

Size Range: ½" to 12" (DN15 – DN300)

- **Pressure Rating:** PN10 – PN16 / ANSI Class 150
- **Materials:** Cast Iron, Ductile Iron, SS, PVC, Rubber Lined
- **End Connection:** Flanged/Threaded/Welded
- **Temperature Range:** -10°C to +180°C
- **Seat/Body Material:** EPDM, PTFE, Rubber Lined, SS
- **Coating:** Epoxy-coated / Anti-corrosion lining
- **Applications:** Chemical & Petrochemical, Water Treatment, Food & Beverage, Pharma & Biotech, Mining



Gate Valve

Size Range: ½" to 48" (DN15 – DN1200)

- **Pressure Rating:** PN10–PN40/ANSI Class 150/300
- **Materials:** Cast Iron, Ductile Iron, WCB, SS(304/316)
- **End Connection:** Flanged / Screwed / Welded
- **Operation:** Handwheel, Gear, or Actuator
- **Temperature Range:** -20°C to +250°C
- **Seat/Body Material:** Metal Seated/EPDM/PTFE
- **Coating:** Epoxy Coated / Painted
- **Applications:** Water Treatment Plants, Oil & Gas Pipelines, Chemical & Petrochemical Industry, HVAC Systems, Power Plants



Globe Valve

Size Range: ½" to 24" (DN15 – DN600)

- **Pressure Rating:** PN10 – PN40/ANSI Class 150/300
- **Materials:** Cast Iron, Ductile Iron, WCB, SS (304/316)
- **End Connection:** Flanged / Screwed / Welded
- **Operation:** Handwheel / Gear / Actuator
- **Temperature Range:** -20°C to +400°C
- **Seat/Body Material:** Metal / PTFE / EPDM
- **Coating:** Epoxy Coated / Painted
- **Applications:** Chemical & Petrochemical, Water Treatment, Power Plants, Oil & Gas, Pharma & Biotech

Fixed Cone Valves

Size Range: 12" to 118" (DN300–DN3000)



- **Pressure Rating:** PN10 – PN40/ANSI Class 150–300
- **Materials:** Carbon Steel, SS, Ductile Iron
- **End Connection:** Flanged / Welded
- **Operation:** Manual, Hydraulic, or Electric Actuator
- **Temperature Range:** -20°C to +200°C
- **Seat/Body Material:** SS/Bronze
- **Coating:** Epoxy Coated/Anti-Corrosion Painted
- **Applications:** Hydropower Plants, Dams & Reservoirs, Irrigation Systems, Water Supply Projects, Municipal & Industrial Pipelines

Needle Valves

Size Range: ¼" to 2" (DN6 – DN50)



- **Pressure Rating:** Up to 6000 PSI (PN100–PN400)
- **Materials:** (SS304 / SS316), Brass, Carbon Steel
- **End Connection:** Threaded/Compression
- **Operation:** Manual Handwheel / Actuator
- **Temperature Range:** -20°C to +250°C
- **Seat/Body Material:** Metal Seated/PTFE/Graphite
- **Coating:** Nickel Plated / Polished Finish
- **Applications:** Oil & Gas, Chemical & Petrochemical, Power Plants, Pharma & Biotech,

Pinch Valves

Size Range: DN15 (½") – DN600 (24")



- **Pressure Rating:** PN10 – PN16
- **Materials:** Cast Iron, Ductile Iron, SS, Rubber Sleeve
- **End Connection:** Flanged / Screwed
- **Operation:** Manual Handwheel / Pneumatic
- **Temperature Range:** -20°C to +120°C
- **Seat/Body Material:** Rubber Sleeve (EPDM / NR / NBR) with Metal Body
- **Coating:** Epoxy Powder Coated / Painted
- **Applications:** Chemical & Petrochemical, Mining & Slurry Handling, Water Treatment, Food & Beverage

Plug Valves

Size Range: 8" to 24" (DN200 – DN600)

- **Pressure Rating:** PN10 – PN40 / ANSI Class 150/300
- **Materials:** Carbon Steel / Stainless Steel
- **End Connection:** Flanged / Welded
- **Operation:** Manual, Hydraulic, or Electric Actuator
- **Temperature Range:** -20°C to +200°C
- **Seat/Body Material:** SS / Hard-faced Alloy
- **Coating:** Epoxy/Polyurethane corrosion-resistant coating
- **Applications:** Dams & Reservoirs, Hydropower Stations, Irrigation Projects, Water Distribution Networks, Flood Control Systems



Ball Valve

Size Range: ½" to 24" (DN15 – DN600)

- **Pressure Rating:** PN10 – PN40/ANSI Class 150/300/600
- **Materials:** Carbon Steel, SS (304 / 316), Brass
- **End Connection:** Flanged / Screwed / Welded
- **Operation:** Lever, Gear, Pneumatic / Electric Actuator
- **Temperature Range:** -20°C to +250°C
- **Seat/Body Material:** PTFE / RPTFE / Metal Seated
- **Coating:** Epoxy Coated / Painted
- **Applications:** Oil & Gas, Chemical & Petrochemical, Water Treatment, Power Plants, Food & Beverage



Butterfly Valve

Size Range: 2" to 48" (DN50 – DN1200)

- **Pressure Rating:** PN10 – PN25 / ANSI Class 150
- **Materials:** Cast Iron, Ductile Iron, WCB, SS
- **End Connection:** Wafer / Lug / Flanged
- **Operation:** Lever, Gear, Pneumatic or Electric Actuator
- **Temperature Range:** -20°C to +200°C
- **Seat/Body Material:** EPDM / NBR / PTFE / SS
- **Coating:** Fusion Bonded Epoxy / Painted
- **Applications:** Water & Wastewater, Chemical & Petrochemical, HVAC Systems, Food & Beverage, Power Plants





Tilting Disc Check Valves

Size Range: 2" to 48" (DN50 – DN1200)

- **Pressure Rating:** PN10 – PN40 / ANSI Class 150/300
- **Materials:** Cast Iron, Ductile Iron, WCB, SS
- **End Connection:** Flanged / Welded
- **Operation:** Automatic Non-return
- **Temperature Range:** -20°C to +250°C
- **Seat/Body Material:** Metal / EPDM / NBR / PTFE
- **Coating:** Epoxy Coated / Painted / Galvanized
- **Applications:** Water Treatment, Oil & Gas, Chemical & Petrochemical, Power Plants, HVAC & Industrial Pipelines



Rubber Duckbill Check Valves

Size Range: 2" to 70" (DN50 – DN1800)

- **Pressure Rating:** Up to 10 bar
- **Materials:** EPDM, Neoprene, Natural Rubber, reinforced fabrics
- **End Connection:** Flanged / Slip-on / Inline
- **Operation:** Non-return, self-acting
- **Temperature Range:** -20°C to +120°C
- **Seat/Body Material:** Rubber / Fabric-reinforced elastomer
- **Coating:** UV & ozone resistant rubber lining
- **Applications:** Wastewater & Sewage, Stormwater Outfalls, Marine & Coastal Discharge, Power Plants, Chemical Industry



Swing Check Valves

Size Range: 2" to 24" (DN50 – DN600)

- **Pressure Rating:** PN10 – PN40 / ANSI Class 150/300
- **Materials:** Cast Iron, Ductile Iron, WCB, SS(304/316)
- **End Connection:** Flanged/Butt Weld/Socket Weld
- **Operation:** Automatic
- **Temperature Range:** -20°C to +200°C
- **Seat/Body Material:** Metal Seated / EPDM / PTFE
- **Coating:** Epoxy / Anti-corrosion Painted
- **Applications:** Water Treatment, Oil & Gas, Chemical & Petrochemical, Power Plants, HVAC Systems

SEERVII

Contact



+91 8866325879



seerviixim@gmail.com



www.seervii.com



Ahmedabad