

# SEERVII



## BEARING CATALOG

High precision load handling performance

[www.seervii.com](http://www.seervii.com)

# About seervii

---

Reliable Industrial Supply. Trusted Global Trade.

SEERVII is an India-based industrial supply and export company, providing a wide range of engineering products to industries and global buyers.

We specialize in sourcing and supplying valves, pumps, electric motors, bearings, fasteners, flanges, pipe fittings, electrical items, power tools, and safety products through a trusted supply network.

With a focus on quality, timely delivery, and transparent communication, SEERVII supports both domestic and international customers with dependable supply solutions.

---

## Ball Bearings



- **Material:** High Carbon Chrome Steel (GCr15 / SAE 52100), Stainless Steel, Ceramic (Optional)
- **Precision:** P0, P6, P5, P4
- **Sealing:** Open/ZZ(Metal Shield)/2RS(Rubber Seal)
- **Clearance:** C2, Normal (CN), C3, C4
- **Cage:** Steel / Brass / Nylon
- **Lubrication:** Grease / Oil
- **Temperature Range:** -20°C to +150°C (Up to +300°C Available)
- **Applications:** Electric Motors, Pumps, Gearboxes, Automotive, Conveyors, Industrial Machinery

## Deep Groove Ball Bearings



- **Design:** Single Row / Double Row
- **Material:** High Carbon Chrome Steel / Stainless Steel
- **Precision:** P0, P6, P5, P4
- **Sealing:** Open / ZZ / 2RS
- **Cage:** Steel / Brass / Nylon
- **Temperature Range:** -20°C to +150°C
- **Applications:** Electric Motors, Pumps, Fans, Appliances

## Angular Contact Bearings



- **Design:** Single / Double Row
- **Material:** Chrome Steel / Stainless Steel
- **Precision:** P6, P5, P4
- **Sealing:** Open / Sealed
- **Contact Angle:** 15° / 25° / 40°
- **Temperature Range:** -20°C to +150°C
- **Applications:** CNC Machines, Pumps, Gearboxes

## Roller Bearings



- **Material:** High Carbon Chrome Steel / Alloy Steel
- **Precision:** P0, P6, P5
- **Sealing:** Open / Sealed (as per type)
- **Cage:** Steel / Brass / Polyamide
- **Temperature Range:** -20°C to +150°C
- **Applications:** Heavy Machinery, Gearboxes, Motors, Mining, Construction Equipment

## Cylindrical Roller Bearings



- **Design:** Single Row / Double Row / Multi Row
- **Material:** High Carbon Chrome Steel / Alloy Steel
- **Precision:** P0, P6, P5
- **Sealing:** Open Type
- **Cage:** Steel / Brass / Polyamide
- **Temperature Range:** -20°C to +150°C
- **Applications:** Gearboxes, Electric Motors, Heavy Machinery, Rolling Mills

## Spherical Roller Bearings



- **Design:** Double Row, Self-Aligning
- **Material:** High Carbon Chrome Steel / Alloy Steel
- **Precision:** P0, P6, P5
- **Sealing:** Open / Sealed
- **Cage:** Steel / Brass
- **Temperature Range:** -20°C to +200°C
- **Applications:** Heavy Machinery, Mining, Crushers, Conveyors, Vibrating Screens

## Tapered Roller Bearings

- **Design:** Single Row / Double Row / Four Row
- **Material:** High Carbon Chrome Steel / Alloy Steel
- **Precision:** P0, P6, P5
- **Sealing:** Open Type
- **Cage:** Steel / Brass
- **Temperature Range:** -20°C to +150°C
- **Applications:** Automotive, Axles, Gearboxes, Rolling Mills, Heavy Equipment



## Needle Bearings

- **Design:** Thin Section / Drawn Cup / Cage Type
- **Material:** High Carbon Chrome Steel / Alloy Steel
- **Precision:** Standard / High Precision
- **Sealing:** Open / Sealed
- **Cage:** Steel
- **Temperature Range:** -20°C to +120°C
- **Applications:** Automotive, Gearboxes, Compressors, Compact Machinery

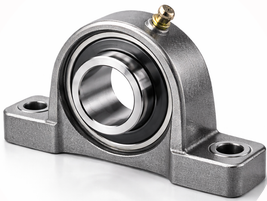


## Thrust Bearings

- **Types:** Ball Thrust / Roller Thrust / Needle Thrust
- **Material:** High Carbon Chrome Steel / Stainless Steel
- **Precision:** P0, P6, P5
- **Sealing:** Open Type
- **Cage:** Steel / Brass
- **Temperature Range:** -20°C to +150°C
- **Applications:** Gearboxes, Pumps, Machine Tools, Automotive, Heavy Machinery



## Pillow Block Bearings



- **Housing:** Cast Iron / Ductile Iron / Stainless Steel
- **Insert Bearing:** UC / UCP / UCF Series
- **Material:** High Carbon Chrome Steel (Insert)
- **Sealing:** Rubber Seal / Triple Lip Seal
- **Lubrication:** Grease (Re-lubrication Facility)
- **Temperature Range:** -20°C to +120°C
- **Applications:** Conveyors, Fans, Agricultural Equipment, Industrial Machinery

## Linear Bearings



- **Types:** LM Bush / Linear Guide Rail / Flanged / Open Type
- **Material:** Bearing Steel / Stainless Steel
- **Precision:** Standard / High Precision
- **Sealing:** Open / Sealed
- **Cage:** Steel / Polymer
- **Temperature Range:** -20°C to +120°C
- **Applications:** CNC Machines, Automation Systems, Packaging Machinery, Robotics

## Bearing Housings



- **Types:** Plummer Block / Pillow Block / Flange / Take-Up
- **Material:** Cast Iron / Ductile Iron / Stainless Steel
- **Design:** Split / Solid Housing
- **Sealing:** Labyrinth Seal / Rubber Seal / Taconite Seal
- **Mounting:** Base Mount / Flange Mount / Take-Up Frame
- **Temperature Range:** -20°C to +200°C
- **Applications:** Conveyors, Mining, Cement Plants, Steel Industry, Heavy Machinery

# SEERVII

## Contact

---



+91 8866325879



seerviigroup@gmail.com



www.seervii.com



Ahmedabad , Bharuch