

SEERVII



INDUSTRIAL VALVES CATALOG

Reliable Flow Control You Can Trust

www.seervii.com

About seervii

Reliable Industrial Supply. Trusted Global Trade.

SEERVII is an India-based industrial supply and export company, providing a wide range of engineering products to industries and global buyers.

We specialize in sourcing and supplying valves, pumps, electric motors, bearings, fasteners, flanges, pipe fittings, electrical items, power tools, and safety products through a trusted supply network.

With a focus on quality, timely delivery, and transparent communication, SEERVII supports both domestic and international customers with dependable supply solutions.



Diaphragm Valves

Size Range: ½" to 12" (DN15 – DN300)

- **Pressure Rating:** PN10 – PN16 / ANSI Class 150
- **Materials:** Cast Iron, Ductile Iron, SS, PVC, Rubber Lined
- **End Connection:** Flanged/Threaded/Welded
- **Temperature Range:** -10°C to +180°C
- **Seat/Body Material:** EPDM, PTFE, Rubber Lined, SS
- **Coating:** Epoxy-coated / Anti-corrosion lining



Gate Valve

Size Range: ½" to 48" (DN15 – DN1200)

- **Pressure Rating:** PN10–PN40/ANSI Class 150/300
- **Materials:** Cast Iron, Ductile Iron, WCB, SS(304/316)
- **End Connection:** Flanged / Screwed / Welded
- **Operation:** Handwheel, Gear, or Actuator
- **Temperature Range:** -20°C to +250°C
- **Seat/Body Material:** Metal Seated/EPDM/PTFE
- **Coating:** Epoxy Coated / Painted
- **Applications:** Water Treatment Plants, Oil & Gas Pipelines, Chemical & Petrochemical Industry, HVAC Systems, Power Plants



Globe Valve

Size Range: ½" to 24" (DN15 – DN600)

- **Pressure Rating:** PN10 – PN40/ANSI Class 150/300
- **Materials:** Cast Iron, Ductile Iron, WCB, SS (304/316)
- **End Connection:** Flanged / Screwed / Welded
- **Operation:** Handwheel / Gear / Actuator
- **Temperature Range:** -20°C to +400°C
- **Seat/Body Material:** Metal / PTFE / EPDM
- **Coating:** Epoxy Coated / Painted
- **Applications:** Chemical & Petrochemical, Water Treatment, Power Plants, Oil & Gas, Pharma & Biotech

Fixed Cone Valves

Size Range: 12" to 118" (DN300–DN3000)



- **Pressure Rating:** PN10 – PN40/ANSI Class 150–300
- **Materials:** Carbon Steel, SS, Ductile Iron
- **End Connection:** Flanged / Welded
- **Operation:** Manual, Hydraulic, or Electric Actuator
- **Temperature Range:** -20°C to +200°C
- **Seat/Body Material:** SS/Bronze
- **Coating:** Epoxy Coated/Anti-Corrosion Painted
- **Applications:** Hydropower Plants, Dams & Reservoirs, Irrigation Systems, Water Supply Projects, Municipal & Industrial Pipelines

Needle Valves

Size Range: ¼" to 2" (DN6 – DN50)



- **Pressure Rating:** Up to 6000 PSI (PN100–PN400)
- **Materials:** (SS304 / SS316), Brass, Carbon Steel
- **End Connection:** Threaded/Compression
- **Operation:** Manual Handwheel / Actuator
- **Temperature Range:** -20°C to +250°C
- **Seat/Body Material:** Metal Seated/PTFE/Graphite
- **Coating:** Nickel Plated / Polished Finish
- **Applications:** Oil & Gas, Chemical & Petrochemical, Power Plants, Pharma & Biotech,

Pinch Valves

Size Range: DN15 (½") – DN600 (24")



- **Pressure Rating:** PN10 – PN16
- **Materials:** Cast Iron, Ductile Iron, SS, Rubber Sleeve
- **End Connection:** Flanged / Screwed
- **Operation:** Manual Handwheel / Pneumatic
- **Temperature Range:** -20°C to +120°C
- **Seat/Body Material:** Rubber Sleeve (EPDM / NR / NBR) with Metal Body
- **Coating:** Epoxy Powder Coated / Painted
- **Applications:** Chemical & Petrochemical, Mining & Slurry Handling, Water Treatment, Food & Beverage

Plug Valves

Size Range: 8" to 24" (DN200 – DN600)

- **Pressure Rating:** PN10 – PN40 / ANSI Class 150/300
- **Materials:** Carbon Steel / Stainless Steel
- **End Connection:** Flanged / Welded
- **Operation:** Manual, Hydraulic, or Electric Actuator
- **Temperature Range:** -20°C to +200°C
- **Seat/Body Material:** SS / Hard-faced Alloy
- **Coating:** Epoxy/Polyurethane corrosion-resistant coating
- **Applications:** Dams & Reservoirs, Hydropower Stations, Irrigation Projects, Water Distribution Networks, Flood Control Systems



Ball Valve

Size Range: ½" to 24" (DN15 – DN600)

- **Pressure Rating:** PN10 – PN40/ANSI Class 150/300/600
- **Materials:** Carbon Steel, SS (304 / 316), Brass
- **End Connection:** Flanged / Screwed / Welded
- **Operation:** Lever, Gear, Pneumatic / Electric Actuator
- **Temperature Range:** -20°C to +250°C
- **Seat/Body Material:** PTFE / RPTFE / Metal Seated
- **Coating:** Epoxy Coated / Painted
- **Applications:** Oil & Gas, Chemical & Petrochemical, Water Treatment, Power Plants, Food & Beverage



Butterfly Valve

Size Range: 2" to 48" (DN50 – DN1200)

- **Pressure Rating:** PN10 – PN25 / ANSI Class 150
- **Materials:** Cast Iron, Ductile Iron, WCB, SS
- **End Connection:** Wafer / Lug / Flanged
- **Operation:** Lever, Gear, Pneumatic or Electric Actuator
- **Temperature Range:** -20°C to +200°C
- **Seat/Body Material:** EPDM / NBR / PTFE / SS
- **Coating:** Fusion Bonded Epoxy / Painted
- **Applications:** Water & Wastewater, Chemical & Petrochemical, HVAC Systems, Food & Beverage, Power Plants



Tilting Disc Check Valves

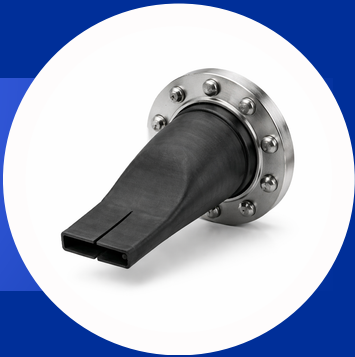
Size Range: 2" to 48" (DN50 – DN1200)



- **Pressure Rating:** PN10 – PN40 / ANSI Class 150/300
- **Materials:** Cast Iron, Ductile Iron, WCB, SS
- **End Connection:** Flanged / Welded
- **Operation:** Automatic Non-return
- **Temperature Range:** -20°C to +250°C
- **Seat/Body Material:** Metal / EPDM / NBR / PTFE
- **Coating:** Epoxy Coated / Painted / Galvanized
- **Applications:** Water Treatment, Oil & Gas, Chemical & Petrochemical, Power Plants, HVAC & Industrial Pipelines

Rubber Duckbill Check Valves

Size Range: 2" to 70" (DN50 – DN1800)



- **Pressure Rating:** Up to 10 bar
- **Materials:** EPDM, Neoprene, Natural Rubber, reinforced fabrics
- **End Connection:** Flanged / Slip-on / Inline
- **Operation:** Non-return, self-acting
- **Temperature Range:** -20°C to +120°C
- **Seat/Body Material:** Rubber / Fabric-reinforced elastomer
- **Coating:** UV & ozone resistant rubber lining
- **Applications:** Wastewater & Sewage, Stormwater Outfalls, Marine & Coastal Discharge, Power Plants, Chemical Industry

Swing Check Valves

Size Range: 2" to 24" (DN50 – DN600)



- **Pressure Rating:** PN10 – PN40 / ANSI Class 150/300
- **Materials:** Cast Iron, Ductile Iron, WCB, SS(304/316)
- **End Connection:** Flanged/Butt Weld/Socket Weld
- **Operation:** Automatic
- **Temperature Range:** -20°C to +200°C
- **Seat/Body Material:** Metal Seated / EPDM / PTFE
- **Coating:** Epoxy / Anti-corrosion Painted
- **Applications:** Water Treatment, Oil & Gas, Chemical & Petrochemical, Power Plants, HVAC Systems

SEERVII

Contact



+91 8866325879



seerviigroup@gmail.com



www.seervii.com



Ahmedabad , Bharuch